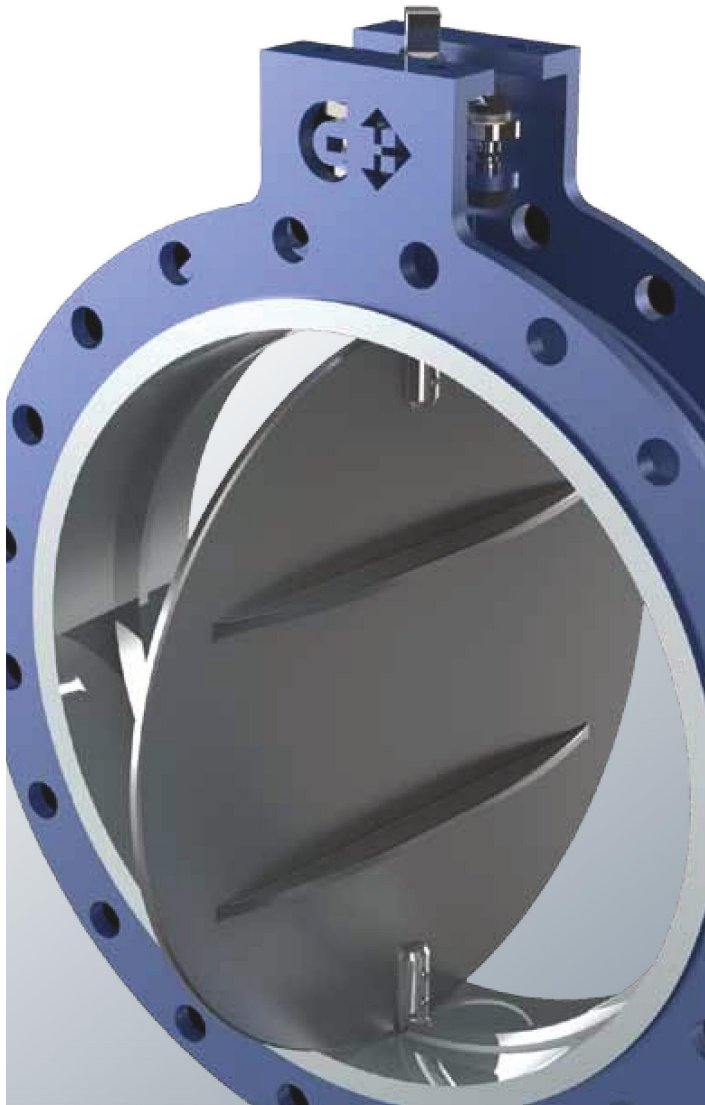




BUTTERFLY VALVES
FOR HOT AIR/SMOKES
FA SERIES





HOT AIR AND SMOKES

FA Series

- technical data
- components
- dimensions

1
1
2
3

BVFA - Wafer **BFFA** - Double Flange
 DN 50 - 1000 • 2" - 40"

Butterfly valves for hot air and smokes

On request max DN 2000 - 80"

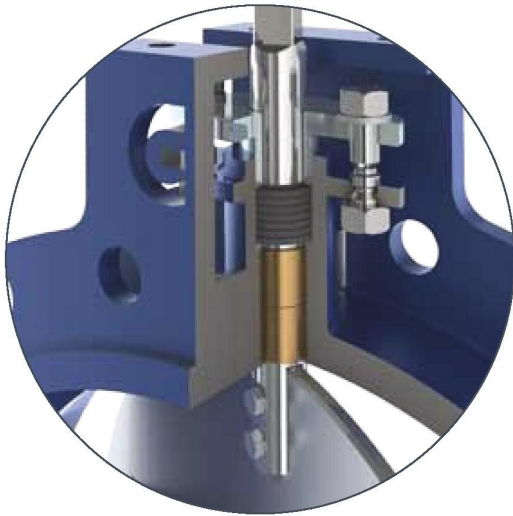


Max working pressure:

BVFA/BFFA DN 50÷1000: **2 Bar**
 Flanges: **PN 6-10-16•A150**

Leakage class:

EN 1349
 Class II (0.1% of rate valve capacity)



BFFA

Types:

Type H: max 300°C
 Type HT: max 600°C
 Type HTT: max 1100°C



BODY

material	references	standard coating	DN
Carbon steel	S275JR ASTM A516	Epoxy RAL 5009	50-1000
Stainless steel	AISI 304	-	50-1000
	AISI 316	-	50-1000
	AISI 321	-	50-1000

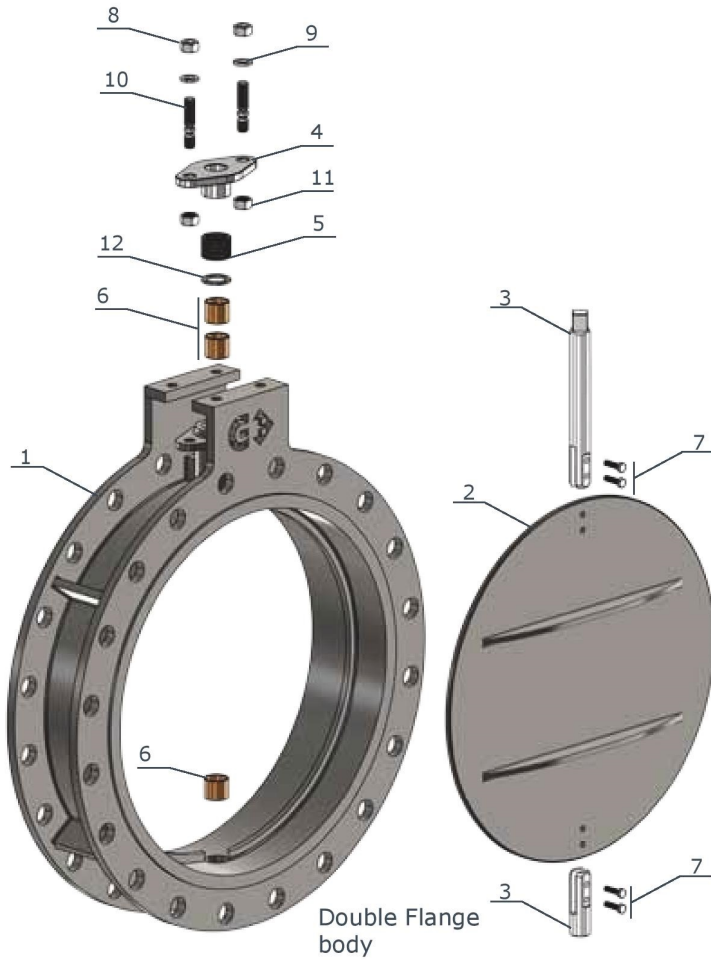
DISC

materiale	references	standard coating	DN
Carbon steel	S275JR ASTM A516	EpoXY RAL 5009	50-1000
Stainless steel	AISI 304	-	50-1000
	AISI 316	-	50-1000
	AISI 321	-	50-1000

BVFA - Wafer **BFFA** - Double Flange

DN 50 - 1000 • 2" - 40"

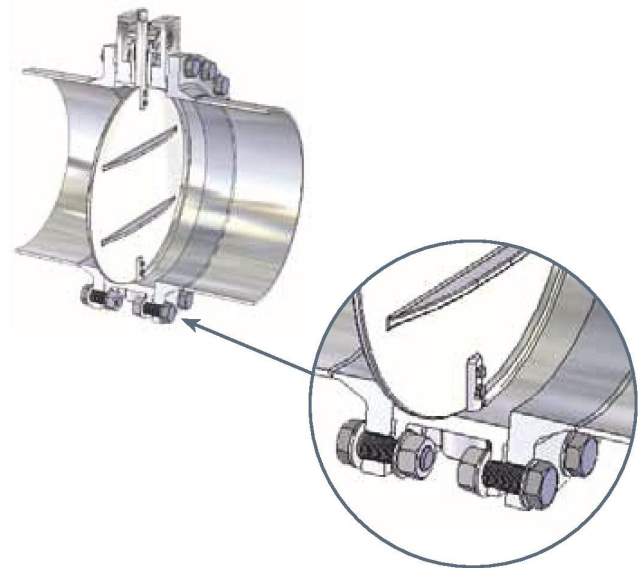
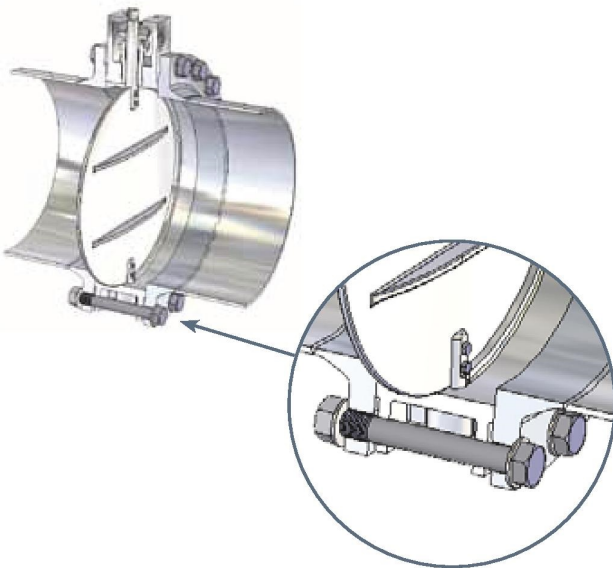
PN 6 - 10 - 16 - 25 • ANSI 150



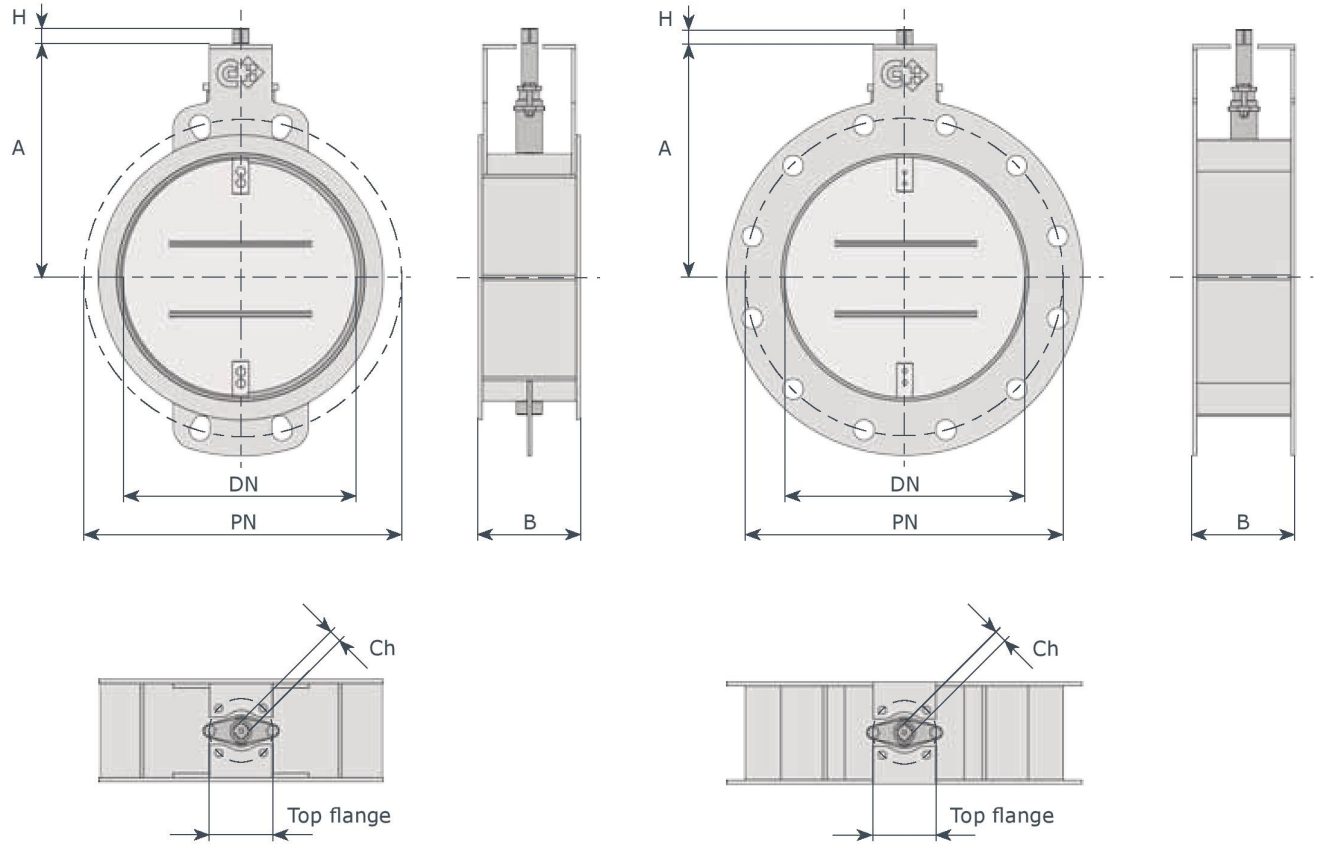
item	q.ty	part	material
1	1	body	<ul style="list-style-type: none"> • S275JR / ASTM A516 • AISI 304 • AISI 316 • AISI 321
2	1	disc	<ul style="list-style-type: none"> • S275JR / ASTM A516 • AISI 304 • AISI 316 • AISI 321
3	2	shaft	<ul style="list-style-type: none"> • st. steel (AISI 430) • st. steel (AISI 304) • st. steel (AISI 316-ti)
4	1	gland	• same material of body valve
5	1	shaft packing	<ul style="list-style-type: none"> • PTFE • graphite
6	3	bush	<ul style="list-style-type: none"> • bronze • stainless steel
7	4	screw	• AISI 316
8	2	nut	• AISI 316
9	2	washer	• AISI 316
10	2	rods	• AISI 316
11	2	nut	• AISI316
12	2	washer	• AISI 316

Right installation:

Wrong installation:



BVFA / BFFA dimensions



DN	"	A			B	top flange ISO 5211	Ch	H
		mod. H	mod. HT	mod. HTT				
50	2	120	-	-	64	F05	11X11	16
65	2 ^{1/2}	130	-	-	64	F05	11X11	16
80	3	155	-	-	64	F05	11X11	16
100	4	163	-	-	64	F05	11X11	16
125	5	195	-	-	70	F05	11X11	16
150	6	214	-	-	70	F05	11X11	16
200	8	268	290	312	89	F05	11X11	16
250	10	277	310	324	114	F07	14X14	18
300	12	290	325	342	114	F07	14X14	18
350	14	315	340	370	127	F10	17X17	20
400	16	360	390	425	140	F10	17X17	20
450	18	386	410	472	152	F10	22X22	25
500	20	410	440	528	152	F10	22X22	25
600	24	486	530	600	154	F10	22X22	25
700	28	535	600	670	165	F12	27X27	30
800	32	605	660	730	190	F12	27X27	30
900	36	675	725	824	203	F14	36X36	45
1000	40	730	810	920	216	F14	36X36	45